

EMTSP

AASHTO
THE VOICE OF TRANSPORTATION

Equipment Management Technical Services Program



EQUIPMENT MANAGEMENT TECHNICAL SERVICES PROGRAM UPDATE

AASHTO SUBCOMMITTEE ON MAINTENANCE

CLARK COUNTY , NEVADA JULY 18, 2016



EQUIPMENT MANAGEMENT TECHNICAL SERVICES PROGRAM

Vision Statement

To serve as the comprehensive national resource supporting effective and efficient governmental highway equipment fleet management.

Mission Statement

To provide governmental equipment fleet management personnel and agency executives with the resources, material and support to promote effective fleet asset management, advance emerging equipment technologies, communicate best practices, and to provide a voice to decision makers and industry on issues impacting fleet operations.

EMTSP OVERSIGHT PANEL

Name	State	Role	AASHTO Region / Partnership
Tim Cunningham	Kansas	Chair	3 / Midwest
Bruce Erickson	Oregon	Member	4 / West
Ken Valentine	Vermont	Member	1 / Northeast
Lisa Kunzman	California	Member	4 / West
Erle Potter	Virginia	Past Chair	2 / Southeast
Doug Burke	Ohio	Member	3 / Midwest
James Chupas	Connecticut	Member	1 / Northeast
John White	South Carolina	Member	2 / Southeast



EMTSP BACKGROUND

Policy Resolution 2008-11 establishing EMTSP was approved by the AASHTO Board of Directors in October 2008

In 2010, we contracted with National Center for Pavement Preservation to administer the program and establish the EMTSP.org website

EMSTP has a Mission, Vision and Goals including our #1 goal which is to support our Equipment Management Regional Partnerships

In 2009 we had only 2 of the 4 regions were active. Currently all 4 regions are active and each hold annual partnership meetings and quarterly conference calls.

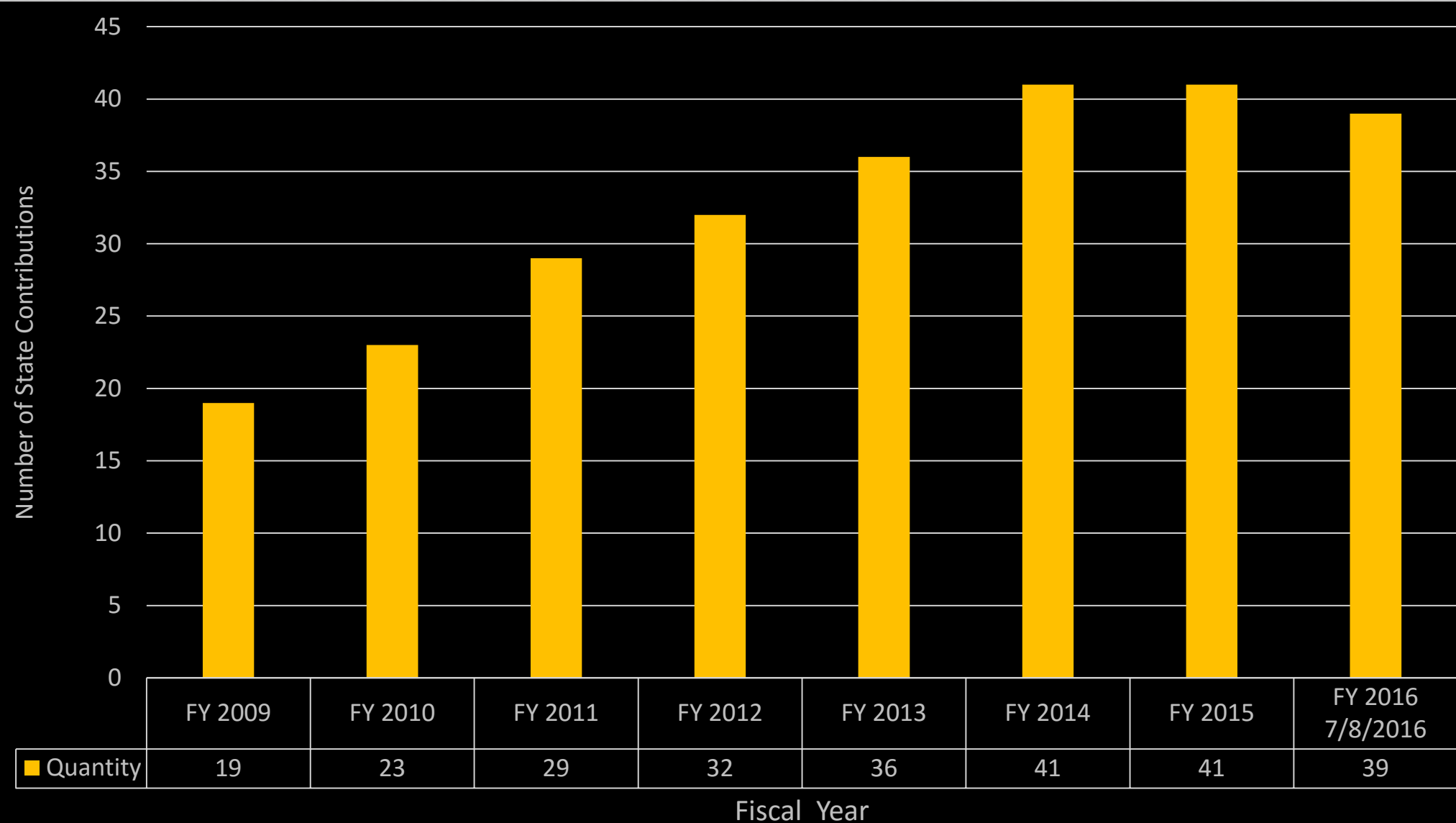
NCHRP Research in Progress

- Guidelines for the Development of Highway Operations Equipment Replacement Lifecycle Criteria (voted #1 priority by SCOM)
- Guidelines for the Development of Highway Operations Equipment Utilization Measurement and Management (voted #1 priority by SCOM)
- Guidelines for the Development of State Departments of Transportation (DOTs) Highway Operations Equipment Multi-year Replacement Plans (voted #2 priority by SCOM)





VOLUNTARY CONTRIBUTION \$3,000



CONTINUOUS SUPPORTERS

- Alabama
- Michigan
- Minnesota
- North Carolina
- North Dakota
- Tennessee





WHAT YOUR CONTRIBUTION PROVIDES

- **Technical Presentations**
- **Annual Conference**
- **Resources**
- **Contacts**
- **Communication**
- **Regional Conference Calls**
- **Performance Measures**
- **Research Prioritization**
- **Workforce Development**
- **And more...**

EMTSP WEBSITE

Equipment Management Technical Services Program (EMTSP)

The EMTSP comprises four regional equipment management partnerships of State Highway Agency (SHA) Equipment Managers and their staffs. The partnerships exist to serve as the comprehensive national resource supporting effective and efficient governmental highway equipment fleet management. For more details on the goals of the program, please visit the [about page](#).



[Midwest](#)



[Northeast](#)



[Southeast](#)



[WSHEMA](#)

2015 Equipment Industry Members

EMTSP Meeting Agendas/Minutes

AASH|O

2015-2016 Program Invoices

EMTSP Search

**National
Performance**

 **Metrics** 

Partnership Meetings

[2016 National Meeting - June \(27-30\)](#)
[2016 TRB Sessions](#)
[2015 TRB Sessions](#)
[2014 National Meeting](#)
[2012 National Meeting](#)

**EMTSP
News**

**EMTSP
ListServ**

State Contact Lists

[Click Here](#)



Annual Conference(s)

- Last month, we held our 3rd Bi-Annual National meeting with all 4 regions in Columbus, OH. We had 39 States attending and 66 vendors exhibiting.
- Conference highlights included:
 - 34 - States attended
 - 55 - State Attendees
 - 201 - General Attendees
 - 66 - Vendor Exhibits
 - 33 - Presentations Given
 - 1 - Technical Tour to the Ohio DOT Truck Fabrication Facility
- In 2017, each region will hold their regional meetings and then in 2018, we will again meet nationally, this time hosted by the Connecticut DOT.



“The most important issue I can take back to my office and discuss with my colleagues for possible implementation is . . .

- **Different ideas, the way other states do things and possibly coming up with involved ideas. Pros and cons of things**
- **Equipment utilization techniques. Plow blades study. Info on new equip presented by vendors**
- **Utilization scoring techniques. Life cycle discussions**
- **Discussions on rental rates and other state’s suggestions**
- **Equipment utilization techniques used by CalTrans. Fiberglass liquid de-icing storage tanks.**
- **Snow removal is primary focus for most states**



PRESENTATION TITLE	PRESENTER	DATE	PDF
 Quality Monitoring of Engine Oils for Equipment on Extended Drain Intervals	Dr. John Hildreth	Jan-16	
 South Carolina DOT Equipment Insight System	Zhonghao Liu	Jan-16	
 Optimizing Flashing Yellow Warning Lights for Safety	Dr. John Bullough	Aug-15	
 TC3 Training & Certification	Jim Smith	Jun-15	
 Status of Current NCHRP Projects	Dennis Halachoff	Jun-15	
 Incorporating On-Board Diagnostics into Fleet Preventive Maintenance Practices	Tara Ramani	Jan-15	
 Engine Variable Impact Analysis For Heavy Duty Diesel Maintenance Equipment	Phil Lewis	Jan-15	
 The Hidden World of Fluid Management	Diego Navarro	Jan-15	
 Luminous Intensity Requirements for Service Vehicle Warning Beacons	John Bullough	Jan-15	
 Case Study of Energy & Environmental Inventory for A Municipal Heavy-Duty Diesel Equipment Fleet	Dr. Phil Lewis	Jun-14	
 NCDOT Equipment Management Training	Newell Brooks	Jun-14	
 Cab Analysis and Scoring Tool	Oregon State University	Jun-14	

Research Voting

- During the National meeting, new needs from regions.
- One topic from each region was added to list of existing needs for voting.
- Top vote getters (new needs) added to research roadmap.
- The Equipment TWG has used this method for research selection and currently has 3 research projects underway in various stages development.





Performance Measures

The EMTSP and a Performance Measure Subcommittee has been working with States to report some or all of the following performance on the EMTSP website

- Preventive Maintenance Compliance
- Recommended Replacement
- Utilization
- Availability

PM Compliance



Light Vehicles
90.39%
NAFA 1-2



Medium Vehicles
97.55%
NAFA 3-6



Heavy Vehicles
97.56%
NAFA 7-8



Non-Self Propelled
96.19%
NAFA 0



**Off Road and
Construction**
93.65%
NAFA 9



Overall
94.97%
NAFA All

Legend

Greater than 90% = **Green**

80%-89% = **Yellow**

Less than 80% = **Red**

Replacement Recommended



Light Vehicles
82.71%
NAFA 1-2



Medium Vehicles
62.27%
NAFA 3-6



Heavy Vehicles
49.66%
NAFA 7-8



Non-Self Propelled
57.12%
NAFA 0



**Off Road and
Construction**
69.83%
NAFA 9



Overall
62.80%
NAFA All

Legend

Less than 10% = **Green**

10%-20% = **Yellow**

Greater than 20% = **Red**

Utilization



Light Vehicles
74%
NAFA 1-2



Medium Vehicles
96%
NAFA 3-6



Heavy Vehicles
84%
NAFA 7-8



Off Road and
Construction
86%
NAFA 9



Overall
80%
NAFA All

Legend

Greater than 85% = **Green**

70%-84% = **Yellow**

Less than 70% = **Red**

Availability



Light Vehicles
N/A%
NAFA 1-2



Medium Vehicles
N/A%
NAFA 3-6



Heavy Vehicles
N/A%
NAFA 7-8



Non-Self Propelled
N/A%
NAFA 0



Off Road and
Construction
N/A%
NAFA 9



Overall
51%
NAFA All

Legend

Greater than 90% = **Green**

80%-89% = **Yellow**

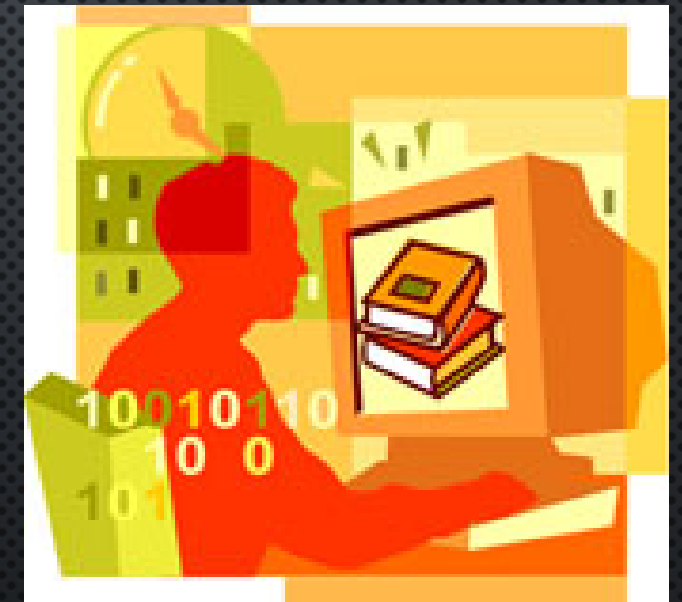
Less than 80% = **Red**

Workforce Development

EMTSP has selected two modules for Web Based Training and is working with NCPP for development and TC3 for hosting.

First module- “Preventative Maintenance Concepts”

Second- “Bench Marking and Best Practices for State Equipment Fleet Management”



CLOSING

- EMTSP is a great resource and a great value
- Check out the website www.EMTSP.org
- Thank you for your continuing support
- Come by the Equipment TWG meeting