

*The National Academies of*  
SCIENCES • ENGINEERING • MEDICINE



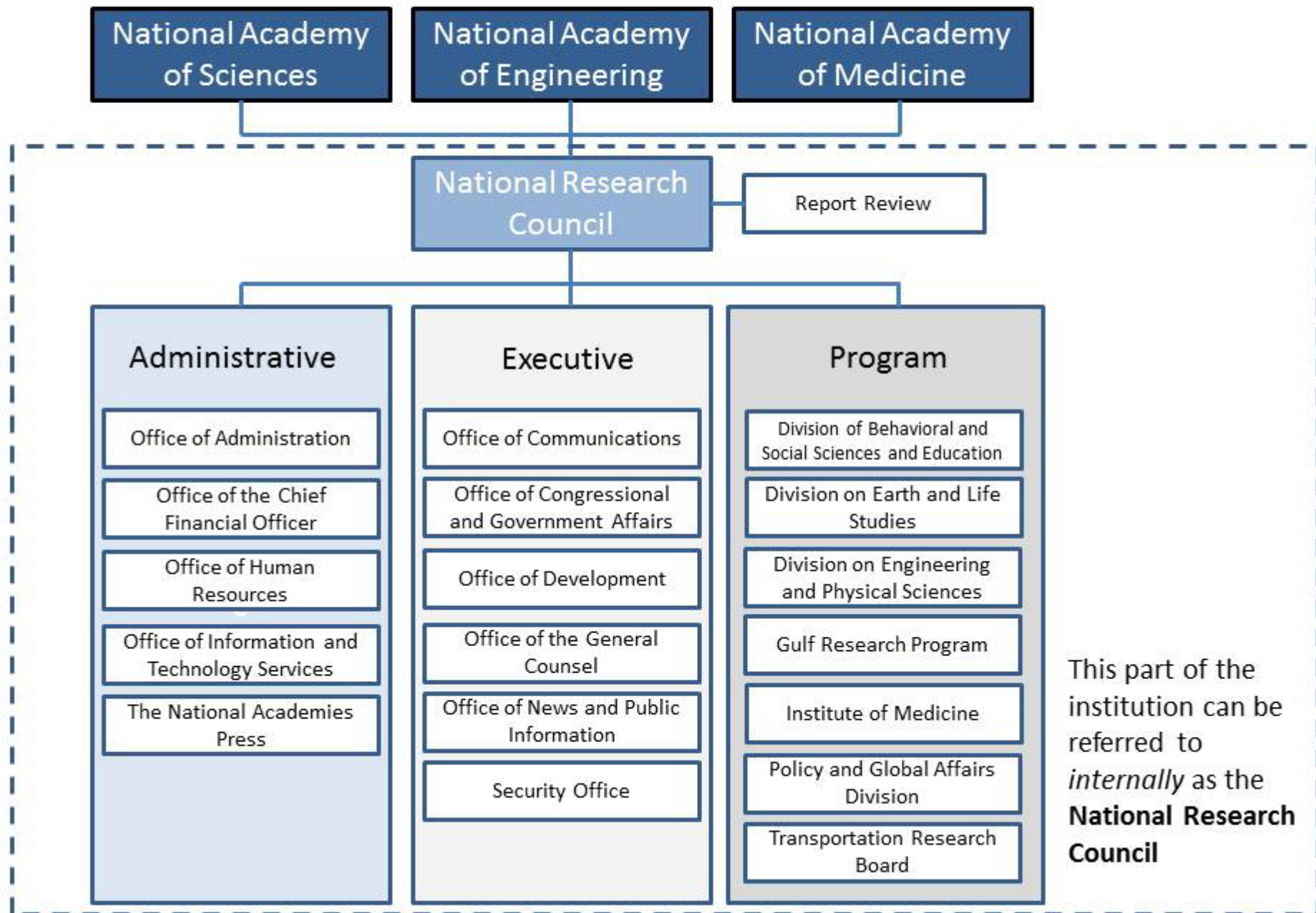
TRANSPORTATION RESEARCH BOARD

# TRB – Update and Joint Conference Introduction

## AASHTO Subcommittee on Maintenance Meeting

James Bryant – TRB Staff

# The National Academies of Sciences, Engineering, and Medicine



# TRB Update

## **February 2015**

Neil Pedersen - New Executive Director

## **March 2015**

Mark Norman - New TRB Director of Development & Strategic Initiatives

## **May 2015**

Dr. Ann Brach – New Director of TRB's Technical Activities Division



TRANSPORTATION RESEARCH BOARD

# Increase the value that sponsors, participants, and customers derive from TRB

- Identify how TRB's research results and products can get to customers faster
- Identify how TRB can further take advantage of technology to provide services and reach stakeholders
- Focus on how customers can more easily find information from and about TRB products
- Focus on how TRB research results can more effectively move to implementation
- Better evaluate and communicate the benefits derived from the results of TRB research



TRANSPORTATION RESEARCH BOARD



# Transportation Research Board 95th Annual Meeting

January 10–14, 2016 ■ Washington, D.C.

## Research Convergence for a Multi-Modal Future



TRANSPORTATION RESEARCH BOARD

*The National Academies of*  
SCIENCES • ENGINEERING • MEDICINE

# 2016 International Conference & Workshop on Winter Maintenance and Surface Transportation Weather

- February 2016 – Online Conference with On-Demand Presentations
- April 25-27, 2016 In-person Workshop (Colorado)

Abstracts for the conference are due September 1, 2015.

<http://www.trb.org/Main/Blurbs/172006.aspx>



TRANSPORTATION RESEARCH BOARD

# 2015 AASHTO/TRB Conference on Transportation Infrastructure Maintenance and Operations



TRANSPORTATION RESEARCH BOARD

---

*The National Academies of*  
SCIENCES • ENGINEERING • MEDICINE



James Bryant

TRB Maintenance & Preservation

[Jbryant@nas.edu](mailto:jbryant@nas.edu)

202-334-2087



TRANSPORTATION RESEARCH BOARD